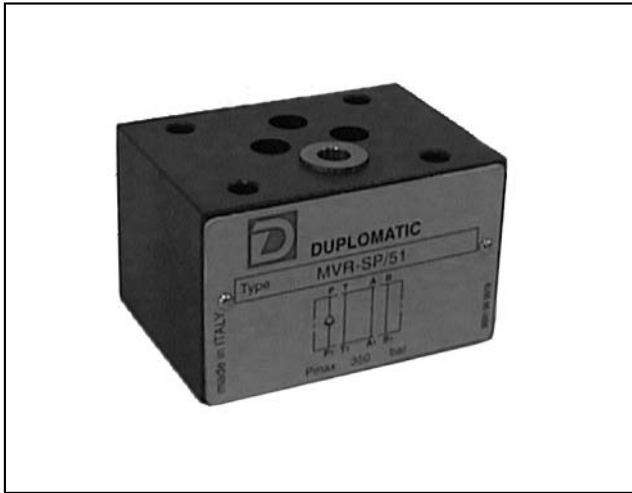




DIPLOMATIC
HYDRAULICS

65 200/104 ED



MVR

DIRECT CHECK VALVE

SERIES 51

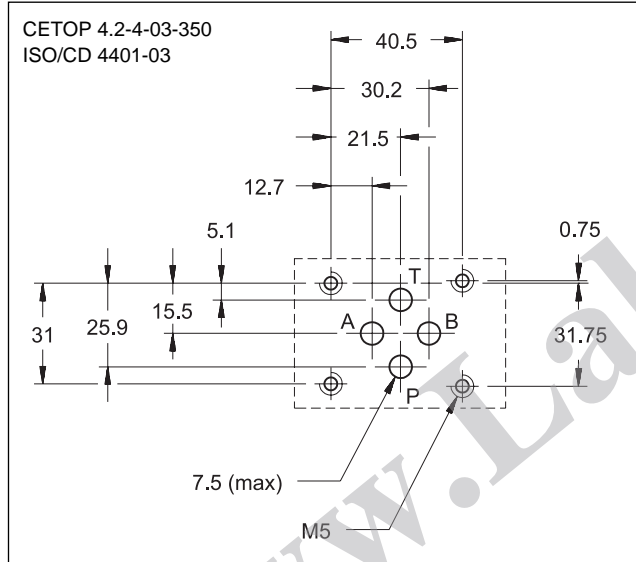
MODULAR VERSION

CETOP 03

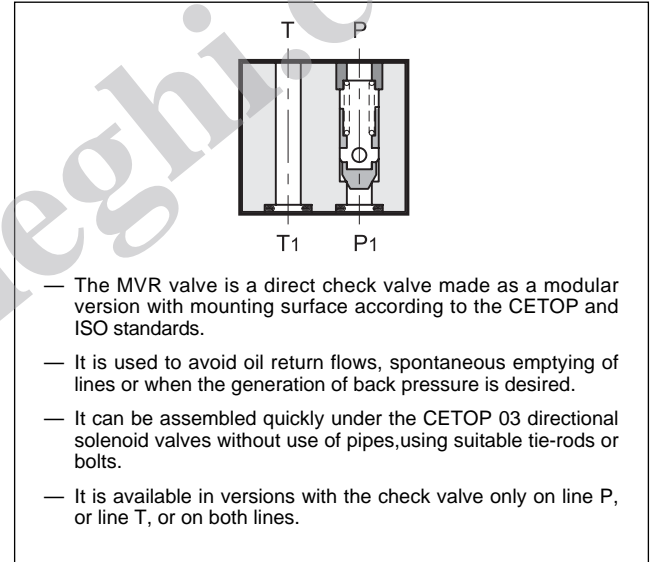
p max 350 bar

Q max (see performance ratings table)

MOUNTING INTERFACE



OPERATING PRINCIPLE



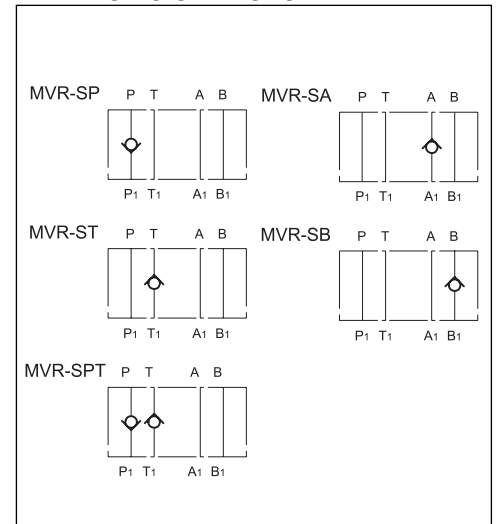
CONFIGURATIONS (see Hydraulic symbols table)

- MVR-SP: check valve on line P.
- MVR-SA: check valve on line A.
- MVR-ST: check valve on line T.
- MVR-SB: check valve on line B.
- MVR-SPT: check valve on lines P and T.

PERFORMANCE RATINGS (measured with mineral oil of viscosity 36cSt at 50°C)

Maximum operating pressure	bar	350
Check valve cracking pressure	bar	3,5 - 0,5 - 5,2
Maximum flow rate in the controlled lines	l/min	50
Maximum flow rate in the free lines	l/min	75
Ambient temperature range	°C	-20 ÷ +50
Fluid temperature range	°C	-20 ÷ +80
Fluid viscosity range	cSt	10 ÷ 400
Recommended viscosity	cSt	25
Degree of fluid contamination	According to NAS 1638 class 10	
Mass	kg	1

HYDRAULIC SYMBOLS





1 - IDENTIFICATION CODE

M	V	R	-	/	51	/	
----------	----------	----------	----------	----------	-----------	----------	--

CETOP 03 size
Modular version

Check valve

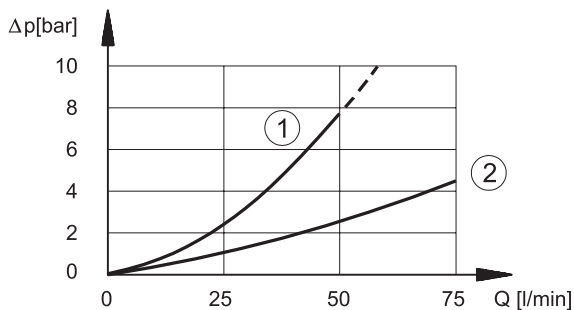
Cracking pressure:
omit for standard cracking pressure = 3,5 bar
1 = 0,5 bar
3 = 5,2 bar

Seals: omit for mineral oils
V = viton for special fluids

Series No. (the overall and mounting dimensions remain unchanged from 50 to 59)

SP: check valve on line P
SA: check valve on line A
SB: check valve on line B
ST: check valve on line T
SPT: check valve on lines P and T

2 - CHARACTERISTIC CURVES (values obtained with viscosity of 36 cSt at 50°C)



① pressure drops on controlled lines

② pressure drops on free lines

NOTE: check valve cracking pressure must be added to the values indicated with the curve ① of the diagram

3 - HYDRAULIC FLUIDS

Use mineral oil-based hydraulic fluids, with the addition of suitable anti-frothing and anti-oxidizing agents. For the use of other types (water glycol, phosphate esters and others), please consult our technical department.

4 - OVERALL AND MOUNTING DIMENSIONS

dimensions in mm

1 Mounting surface with sealing rings:
4 OR type 2037



DIPLOMATIC
HYDRAULICS

DIPLOMATIC OLEODINAMICA SpA

20025 LEGNANO (MI) - P.le Bozzi, 1 / Via Edison
Tel. 0331/472111 - Fax 0331/548328